

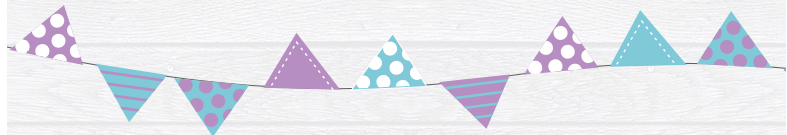
Sponsored by Chittering Tourist Association

search chitteringspringfestival



September 2022

Chittering SpringFest



6180 Great Northern Highway, Bindoon WA 6502
www.visitchittering.wa.gov.au
08 9576 4664 visit@chittering.wa.gov.au
Instagram @visitchittering
Facebook @Visit.Chittering

Monday - Tuesday 10am - 1pm
Wednesday - Friday 10am - 4pm
Weekends 10am-1pm
(Sat 17th & Sun 18th Sep 9am - 3pm)

Visitor Centre



Follow Us:
#chitteringspringfest
facebook.com/chitteringspringfestival2022
Instagram.com/chitteringspringfestival

chitteringspringfest@gmail.com
www.chitteringspringfest.com.au

Contact Us



SUNDAY 28th AUGUST
10 - 3PM
FREE ENTRY
Binda Place, Great Northern Highway, BINDOON

Facebook Taste Of Chittering
Instagram @tasteofchittering
www.visitchittering.com.au/taste/

Taste of Chittering is making a return this year in a new home, sponsored and organised by the Shire of Chittering. Experience a little taste of the country life in Chittering and enjoy a celebration of the region's produce, art, history, lifestyle and more. Explore the market stalls, interactive activities and community festivities. More details to be announced.



Wildflowers

An Open Day at Muchea Tree Farm on Saturday 3rd September has a range of activities on offer, learn propagating skills, floristry workshop and nursery tours to name a few of the activities. Local produce and experts are many & varied, be inspired. Meet owner/operator, Natalie Vallance, the garden Guru of Chittering.



For all the wildflower enthusiasts, the Landcare Wildflower Expo in Muchea on Friday 9th and Saturday 10th of September is a must! There is so much to see and do with a huge display of Chittering's wildflowers and experts on hand to answer any questions you may have on identification of wildflowers and weeds.



Arts, Crafts & Music

On Saturday 17th and Sunday 18th September The Chittering Arts Society is producing its annual Spring Festival Art, Photography and Sculpture Exhibition in the Bindoon Town Hall. The focus of this exhibition is to showcase the creativity and talent of artists and artisans from Chittering and the surrounding Shires. You can vote for your favourite entry in the "People's Choice" award as well as browse through the "Pop Up Shop" where you can purchase locally made wares, plus view a special display of work by our local Pottery group.



Our welcoming Country Women's Association members are planning a craft display and sales at the Bindoon Town Hall on Saturday 17th and Sunday 18th of September, or to chat about the work of their Association. A delightful way to meet the locals.

They will also be open each Tuesday during September between 9am & 12.

A classical piano recital by returning international touring pianist Roman Rudnytsky will be performed in the Bindoon Town Hall, the acoustics of the local hall combined with the interpretation of the music by Roman is a night to remember.

Hymn singing on Wednesday 7th September in the historical and beautiful Holy Trinity Church is an opportunity to visit this local place of worship which has been a part of the history of Chittering since 1886.

Bindoon Open Mic is always a surprise, an evening for those who have an interest in all forms of music; play, sing or listen. A laid back, friendly and welcoming opportunity to simply share a love of music.

Warralakin, father and son duo of songs of Western Australia will be making a return visit to Bindoon on Saturday 3rd September. Join in the fun at the Bindoon Town Hall.

The Chittering Visitor Centre adjacent to the Town Hall is worth a visit, the Centre has had a makeover to a modern and interesting room – during the SpringFest Polla Posavec will display her work and will be in residence working on her art.

Bindoon Arts and Crafts are presenting their annual Quilts in Spring display on Saturday 17th and Sunday 18th September at their headquarters at the Brockman Precinct. A very popular following to see the colourful high quality handcrafted labour of love. Their gift shop will also be open during this time. Morning and Afternoon tea available.



Food & Wine

A visit to Chittering isn't complete without a stop at Bindoon's famous Bakehaus that will be open daily during the festival. Enjoy their amazing pies, sausage rolls, quiches and fresh gourmet rolls then finish off with a coffee and something deliciously sweet such as their cakes, slices, doughnuts or éclairs.

To get your taste buds buzzing head to Little Eeden Farm for some honey tasting and to learn about their Apiary on Wednesdays and Thursdays throughout the festival. Enjoy an informative talk all about bees and honey, with plenty of tasting opportunities from their large range of flavours and products available for sale. The Hive @ Little Eeden café will also be open on Saturdays and Sundays between 10am – 4pm during the festival.

For the fresh vegetable lovers Wootra Farm will be hosting an Asparagus Experience on Saturday 10th and Sunday 11th of September including a tour through their asparagus patch.

If growing your own food is more your style come along to the Thrive Sustainability Creating and Maintaining an Organic Edible Garden workshop on Sunday 4th of September, this hands-on workshop will teach you everything you need to know to lead you to growing a productive, healthy garden.



Laura, from Thrive Sustainability is also hosting another workshop Growing Fruit Trees in the Home Garden on Sunday 11th September. She is offering a 10% off fruit trees purchased on the day, so on your return home you can plant your tree with confidence.

Take a drive via the beautiful Chittering Valley to relax and unwind for an afternoon of music, award winning wines and locally sourced food at Stringybark Winery on Sunday 11th of September. Open daily from Wednesday - Sunday lunch, dinner and Sunday breakfast.



Accommodation

BINDOON
Bindoon Transit Park - www.visitchittering.com.au
6180 Great Northern Highway, Bindoon
6 powered days with 24/7 access to the ablation block
\$22 per bay per night
Maximum stay of 72 hour only with no bookings required
9576 4664 - visit@chittering.wa.gov.au

Bindoon Valley Escape - www.bindoonvalleyescape.com.au
23 Orchard Road, Bindoon
0493 293 862 - info@bindoonvalleyescape.com.au

Bindoon's Windmill Farmstay - www.windmillfarmstay.com
132 Kay Road, Bindoon
0427 771 701 - millionandjoan@windmillfarmstay.com

Orchard Glory Farm Resort - www.orchardglory.com.au
41 Modilabeenie Road, Bindoon
08 9576 2888 - orchardglory@westnet.com.au

CHITTERING & LOWER
Alan and Eve's Eden - www.alanandevesden.com.au
88 Holstein Loop, Lower Chittering
0417 915 884 - info@alanandevesden.com.au

Burrooloo Well Farmstay - www.chitteringacres.com.au/burrooloo
0427 992 099 - ann.ruffitt@hotmail.com

Peace Be Still - www.peacebestill.com.au
1324 Chittering Road, Lower Chittering
08 9571 8108 - peacebestill@inet.net.au

GINGIN
Jessie's Cottage - www.jessiescottage.wa.weebly.com
25 Lefroy Street, Gingen
0419 934 770 - jessiescottage@aapl.net.au

MUCHEA
Enderslee House B & B - www.endersleehouse.com.au
15 Peters Road, Muchea
08 9571 0595 - info@endersleehouse.com.au

NEW NORCIA
www.newnortcia.wa.edu.au
11275 Great Northern Hwy, New Norcia
08 9654 8018 - groups@newnortcia.wa.edu.au



Heritage

The Holy Trinity Church will be holding their open days on Saturday 17th and Sunday 18th of September. Explore the historic church and graveyard with fascinating interpretive graveside stories of the early pioneers, music in the church and enjoy the wildflower display while treating yourself to a delicious Devonshire tea.



The Bindoon Museum will be open on Wednesdays, Saturdays and Sundays throughout the festival with a courtesy bus running from the Bindoon oval on Sunday 18h of September. The museum houses an amazing collection of vintage vehicles, tools, historic household items and old farm machinery.

Step back in time at Enderslea Farm on Blue Plains Road to meet and listen to Dianne Pope bringing you the history of the farm. A rare opportunity to enter the property with its beautifully renovated barn and original homestead.

A once a year chance to visit the Edmund Rice College for their annual Open Day on Saturday 17th. The college provides a range of courses across vocational and agriculture for boarders and day students.



Fellowship at the Holy Trinity church is available at the Holy Communion Service on Sunday 11th September, morning tea is provided in the peaceful setting of this country church.



Family Fun

For a fantastic family day out, head to the Historic Vehicle Day on the Bindoon Oval on Sunday 18th of September. There will be a large display of historic vehicles along with markets stalls, free kids activities and a range of food and coffee vans. A courtesy bus will be available during the day to transport visitors to the Brockman Precinct.



A family experience at Muchea Tree Farm on Saturday 3rd September is a choice if the kids want to join some child friendly workshops.

The Country Campfire at Wannamal on Saturday 10th September is an experience not often found. The evening includes damper and billy tea, a fun evening for children and adults in the warm glow of a campfire.



FOOD & FARMS
T4 Bindoon Bakehaus
U4 Northern Valleys Locavore Store
D38 Berry Sweet Strawberry Farm
P18 Bindoon Hotel
K13 Little Eeden Farm Honey & Apiary
B19 Local Goat
K28 Nesci Estate Wine Farm
O30 Stringybark Winery & Restaurant
P14 Wootra Asparagus Farm
SHOPPING & SERVICES
J5 ADRA Op Shop
B4 Bindoon Arts & Crafts
N5 Bindoon Library
S4 Bindoon Pharmacy
R7 Bindoon Licenced Post Office
Q6 Chittering Visitors Centre
Q4 Liberty Petrol Station
L26 Dunning's Chittering Roadhouse
I31 Muchea Roadhouse
F32 Muchea Tree Farm
B38 Perth's Outback Splash
M31 Thrive Sustainability
ACCOMMODATION
M21 Bindoon Valley Escape
N28 Alan + Eve's Eden
P19 Bindoon's Windmill Farmstay
L25 Burroloo Well Farmstay
I32 Enderlie House Bed & Breakfast
G16 Jessie's Cottage
L17 Orchard Glory Farm Resort
O33 Peace Be Still Guest House
CAMPING
P8 Bindoon Transit Park
P26 Brockman River Rest Area
O31 Lower Chittering Hall
M13 Wannamal Rest Area
HISTORY
O7 Bindoon Town Hall
A4 Brockman Centre / Bindoon Museum / Chittering Road Board
A1 Holy Trinity Church
Q17 Edmund Rice College
O25 Enderlea Farm
R10 New Norcia
TRAILS
W5 Bindoon Tale Trail
U2 Stonehouse Walk
O26 Djidi-Djidi Ridge
O33 Peace Be Still
K22 Spoonbill Lake
M12 Wannamal Walk
ROADSIDE STALLS
E8 Blueberry Bliss
H6 Citrus & Avocado
H5 Citrus
L25 Burroloo Well
O19 Kay Road
P18 Oversby Citrus
O18 Settlement Road
L16 Mango



ENDERSLEA FARM OPEN DAYS

10am and 2pm. 681 Blue Plains Road, Chittering
Dianne Pope, the owner and historian of this heritage property will be your host on both days to present the history of the first settlers of Enderlea Farm. The significance of the families of Enderlea and their contribution to the settlement of Western Australia and Chittering is presented as a fascinating and factual account of their lives. A FREE event, numbers limited.
Bookings appreciated: 0448 441 899 or popetwo@gmail.com



MUCHEA TREE FARM OPEN DAY

9am – 4.30pm. 92 Archibald Street, Muchea.
Offers Propagating, Art, Floristry & Kids Workshops, Nursery tours and the chance to purchase from local horticultural related industries.
Contact Natalie: 9571 4090 or muchtree@nw.com.au
www.muchtreefarm.com.au



WARRALAKIN MUSIC

7pm. Bindoon Hall, 6180 Great Northern Highway.
Father and son duo, songs of Western Australia.
Contact Phil 0404 629 125



CREATING AND MAINTAINING AN ORGANIC EDIBLE GARDEN

9am. Finish Time Approx 3 -30pm. 48 Citron Way, Lower Chittering.
Thrive Sustainability, \$90 per person. Refreshments provided.
Bookings essential. For more info and to book tickets go to <https://thrivesustainability.com.au/collections/workshops-and-event-tickets> or buy tickets in store at Thrive Sustainability **Open Wed, Friday and Saturday 9 till 5**
Contact: 0408 157 301 or info@thrivesustainability.com.au



HYMN SINGING

2pm. 5675 Great Northern Highway, Chittering.
Historic Holy Trinity Church
Everyone is welcome. Contact 0409 567 291



LITTLE EEDENS FROM HIVE TO TABLE

11am-12pm. 429 Cook Road, Moolabeenee.
Informative talk about our apiary, how we look after our bees and produce our honey. Includes tasting a variety of honey flavours and products are available for sale.
Little Eeden Farm, Free event, bookings required. Contact: Sharyn 0449 508 541



CHITTERING LANDCARE WILDFLOWER SHOW

10am – 4pm. 175 Old Gingin Road, Muchea.
A FREE event
Display of local named wildflowers. Assistance with Identification of wildflowers and weeds.
Chittering Landcare Centre
chitteringlandcare@iinet.net.au, Contact: 9571 0400 www.chitteringlandcare.org.au



BINDOON OPEN MIC

7pm. Bindoon Hall, 6180 Great Northern Highway
Read, play, sing or just listen. Locals and visitors all welcome
Contact 0428 914 624



“COUNTRY CAMPFIRE” AT THE WANNAMAL OVAL

From 6.00pm. Includes damper and billy tea.
Admission @ \$5.00, for 12 years and over, children under 12 free.
Hot food on sale – cash only.
Bookings appreciated to wannamalcc@gmail.com
Enquiries to: Ruth Loudon – Secretary 0427788946 or 96557024



ASPARAGUS EXPERIENCE @ WOOTRA FARM

11am and 2pm. 164 Wells Glover Road, Bindoon.
Meet Peter and Colleen for a walk and talk through the asparagus patch, taste a freshly harvested spear and a sample of steamed asparagus with our tarragon butter. Take home a complimentary bunch of asparagus.
Numbers are limited, bookings are essential by contacting 0407 481 350 or wootrafarm@gmail.com Cost \$20 per person, payable at time of booking.



HOLY COMMUNION SERVICE WITH REV. LYNNE EASTOE

9:30am. 5675 Great Northern Highway, Chittering.
Holy Trinity Anglican Church, Chittering
Enjoy fellowship in our 1886 country church, followed by morning tea.
Everyone is welcome. Contact: 0428 914 624



GROWING FRUIT TREES IN THE HOME GARDEN

9am. Duration Approx. 3 hours. 48 Citron Way, Lower Chittering.
\$50 per person, bookings required
For more info and to book tickets go to <https://thrivesustainability.com.au/collections/workshops-and-event-tickets> or buy tickets in store at Thrive Sustainability **Open Wed, Friday and Saturday 9 till 5**
Contact: 0408 157 301 or info@thrivesustainability.com.au



STRINGYBARK RESTAURANT AND WINERY

3pm-6pm. 2060 Chittering Road, Chittering.
Kick back for an afternoon of music and wine with a locally sourced menu to choose from. No entry charges.
Bookings appreciated 9571 8069 or brucecu@iinet.net.au



LITTLE EEDENS FROM HIVE TO TABLE

11am-12pm. 429 Cook Road, Moolabeenee.
Informative talk about our apiary, how we look after our bees and produce our honey. Includes tasting a variety of honey flavours and products are available for sale. Little Eeden Farm, Free event, bookings required
Contact: Sharyn 0449 508 541



EDMUND RICE COLLEGE OPEN DAY

10am – 2pm. 3398 Bindoon-Dewar Pool Road, Bindoon.
Contact: Shelley, Fleur or Trish
9576 5500 E: admin@erc.wa.edu.au



ART AND PHOTOGRAPHY EXHIBITION

9am – 4pm. Bindoon Town Hall, 6180 Great Northern Highway
Hosted by the Chittering Art Society showcasing Artists and Artisans throughout the region.
Also an Art Pop Up Shop including Pottery, Sculpture & Crafts, plus a fun filled continuous raffle. A FREE event.
Email: chitteringartsociety@outlook.com



COUNTRY WOMENS ASSOCIATION (CWA)

From 9am – 3pm. 6180 Great Northern Highway.
Bindoon Town Hall. Craft Display & Craft Sales. Items made by the members. CWA members available to answer questions about the Association. Look for the blue CWA Logo.



HOLY TRINITY CHURCH AND PIONEER GRAVEYARD

9am to 3pm. 5675 Great Northern Highway, Chittering.
Wildflower Display. Discover Headstone Art & Meaning
Music in the church. Devonshire Tea \$5.



QUILTS IN SPRING

10am- 3pm. 5765 Great Northern Highway.
Morning and Afternoon tea available.
Contact : 0409 443 001 E: helen@patchofheavenfdc.com.au



BINDOON HISTORIC VEHICLE DAY

9am – 3pm. 6182 Great Northern Highway.
Bindoon Oval. Enjoy a family day out with a large display of historic vehicles along with markets stalls, free kids' activities and a range of food and coffee vans. Courtesy Bus to Brockman Centre Museum precinct.
Contact: Chris Waldie 0411 420 501. bindoonhistorical@gmail.com



LITTLE EEDENS FROM HIVE TO TABLE

11am-12pm. 429 Cook Road, Moolabeenee.
Little Eeden Farm. Informative talk about our apiary, how we look after our bees and produce our honey. Includes tasting a variety of honey flavours and products are available for sale. Free event, bookings required
Contact: Sharyn 0449 508 541



A CLASSICAL PIANO RECITAL

6pm Sharp. Bindoon Town Hall, Great Northern Highway, Bindoon
Presented by Bindoon Entertainment, Arts and Theatre. Performed by International Touring Pianist ROMAN RUDNYTSKY. Contact: 0428 914 624



Sample the best food and produce of the region at the **NORTHERN VALLEYS LOCAVORE STORE**. Open everyday from 9am until 4pm with free tastings throughout the Spring festival. With a focus on sustainability, this Farmers Market style store brings people and produce together under one roof, offering in season fruit and vegetables, unprocessed honey, cold pressed oils, grass fed and free-range meat, handcrafted goats cheese and gelato, cold-pressed juices and more! Find us at 29 Binda Place, Bindoon, next door to the **BINDOON BAKEHAUS** and follow us @nvalcavorestore.

COUNTRY WOMENS ASSOCIATION (CWA)

Every Tuesday in September the CWA room at the Bindoon Town Hall, Great Northern Highway, will be open for visitors from 9am to 12 noon. Craft Display and Craft Sales. Items made by the members. CWA members available to answer questions about the Association. Look for the blue CWA Logo.



THROUGHOUT THE MONTH OF SEPTEMBER

NESCI ESTATE WINE FARM (WEEKENDS ONLY)

Established in 1948 and featuring the Chittering Valley wine range, including port and liquors from some of the oldest vines in the region.
Check out what's on at facebook.com/nesciestatewinefarm/

The attractive wildflower labels on the range of wines is an interesting point of difference and the wine within is not disappointing. Situated on a working cattle property, the winery and tasting room is a delightful surprise set within a lush garden and surrounding trees. **PLATTERS** available by arrangement 4284 Great Northern Highway, Lower Chittering
9571 4102 nesciestate@gmail.com

CHITTERING VISITOR CENTRE LOCAL ARTIST EXHIBIT

Enjoy a beautiful exhibit of artwork by local artist Polla Posavec. Polla's representative style expresses the simple joys of nature in watercolour and gouache.

This display celebrates the unique flora and fauna of the region.

Artwork will be on display for the entire 3 weeks of the festival in the centre however you can visit the centre from 10am-12pm on September 3rd, 10th, 17th & 18th where Polla will be there in person painting and / or chatting about her artwork.

